

MONTERINGSANVISNING

FLAKKÅPA -

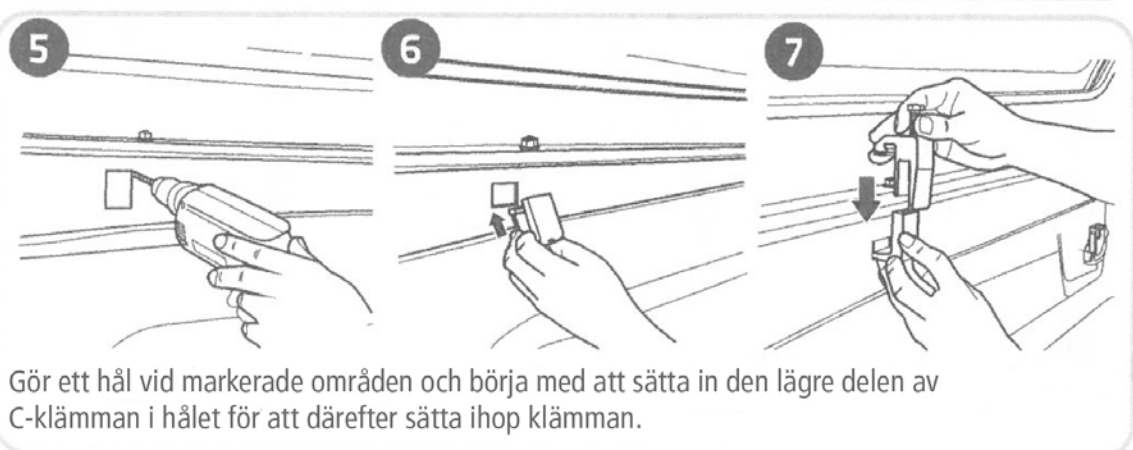
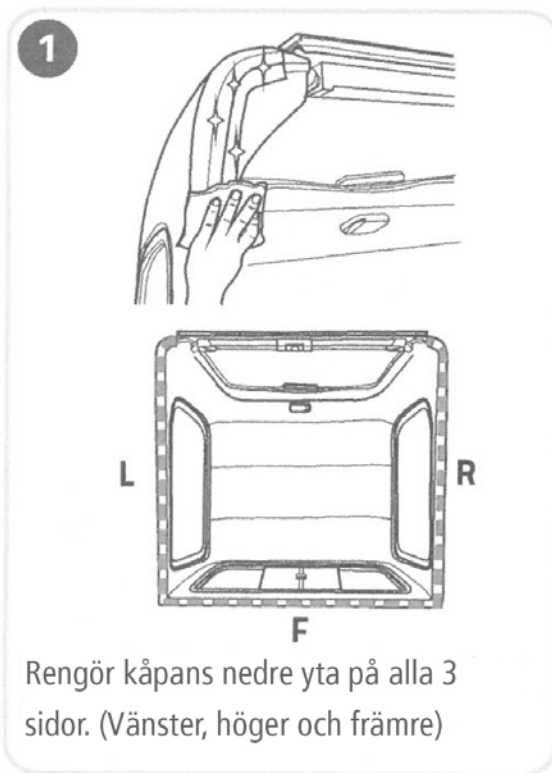
SIDA 1



MONTERINGSANVISNING

FLAKKÅPA -

SIDA 2

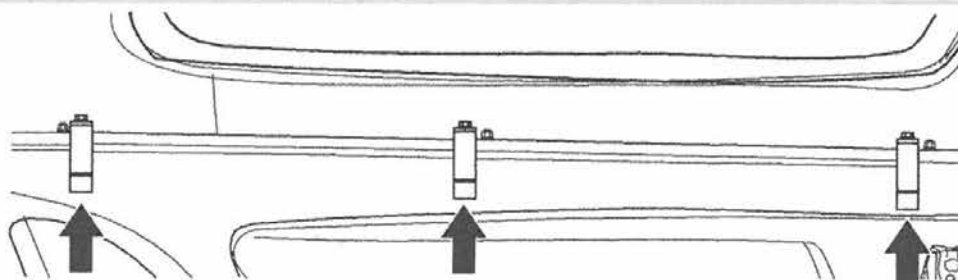


MONTERINGSANVISNING

FLAKKÅPA -

SIDA 3

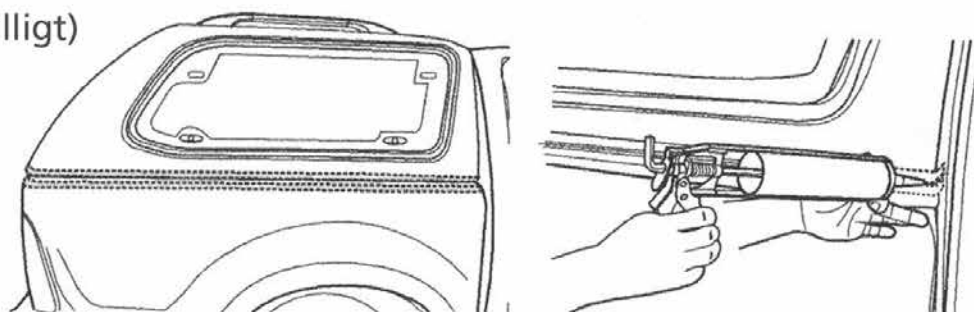
8



Montera 3 C-Klämmor på varje sida.

9

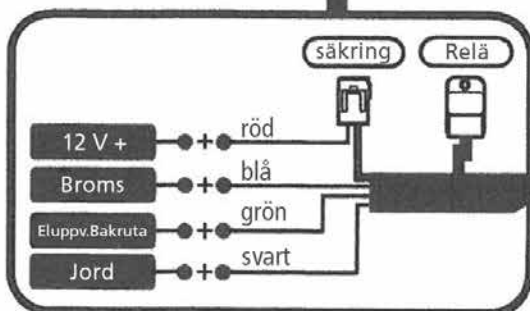
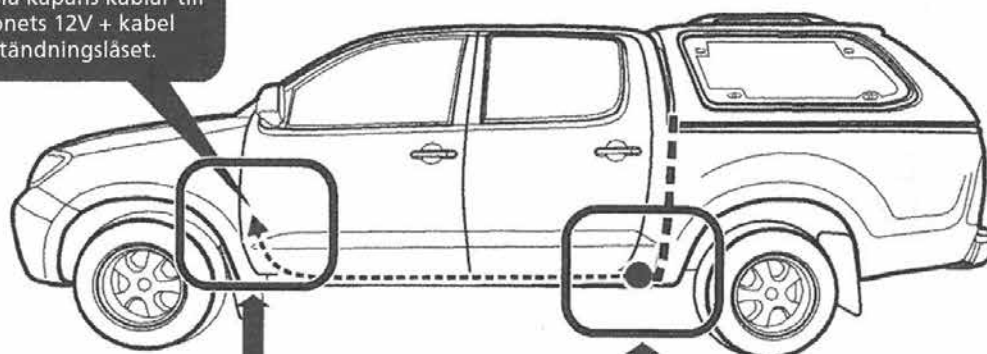
(Frivilligt)



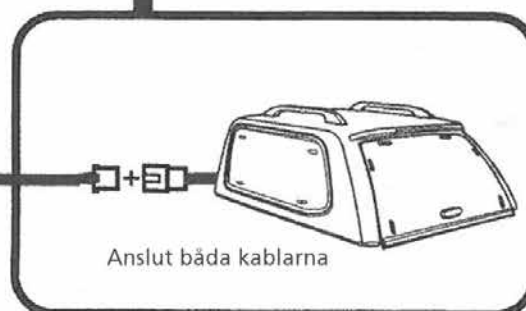
Fäst maskeringstejp längs kåpan och flakinsatsen.
Använd sedan tätningsmedel (silikon).

Kopplingsschema

Koppla kåpans kablar till fordonets 12V + kabel nära tändningslåset.



Monteringsattsens kablar



Kåpans kabel

MONTERINGSANVISNING

FLAKKÅPA -

SIDA 4

Flakkåpa installationsmanual



Work System Sweden AB – worksystem.se

KONTAKT

Stockholm 08-40021120

Centralt 036-4400110

Göteborg 031-3097500

Trestad 0520-528 599

Komponentlista



Flakkåpa x 1



C-klämman x 6



Plastmutterskydd x 16



Nycklar x 4



Kabelset x 1



Svamptätning x 3
(botten)



AA Batterier x 4